

# CEDAR CREEK PRIORITY PLANNING AREA

## EXISTING IMPERVIOUS



N

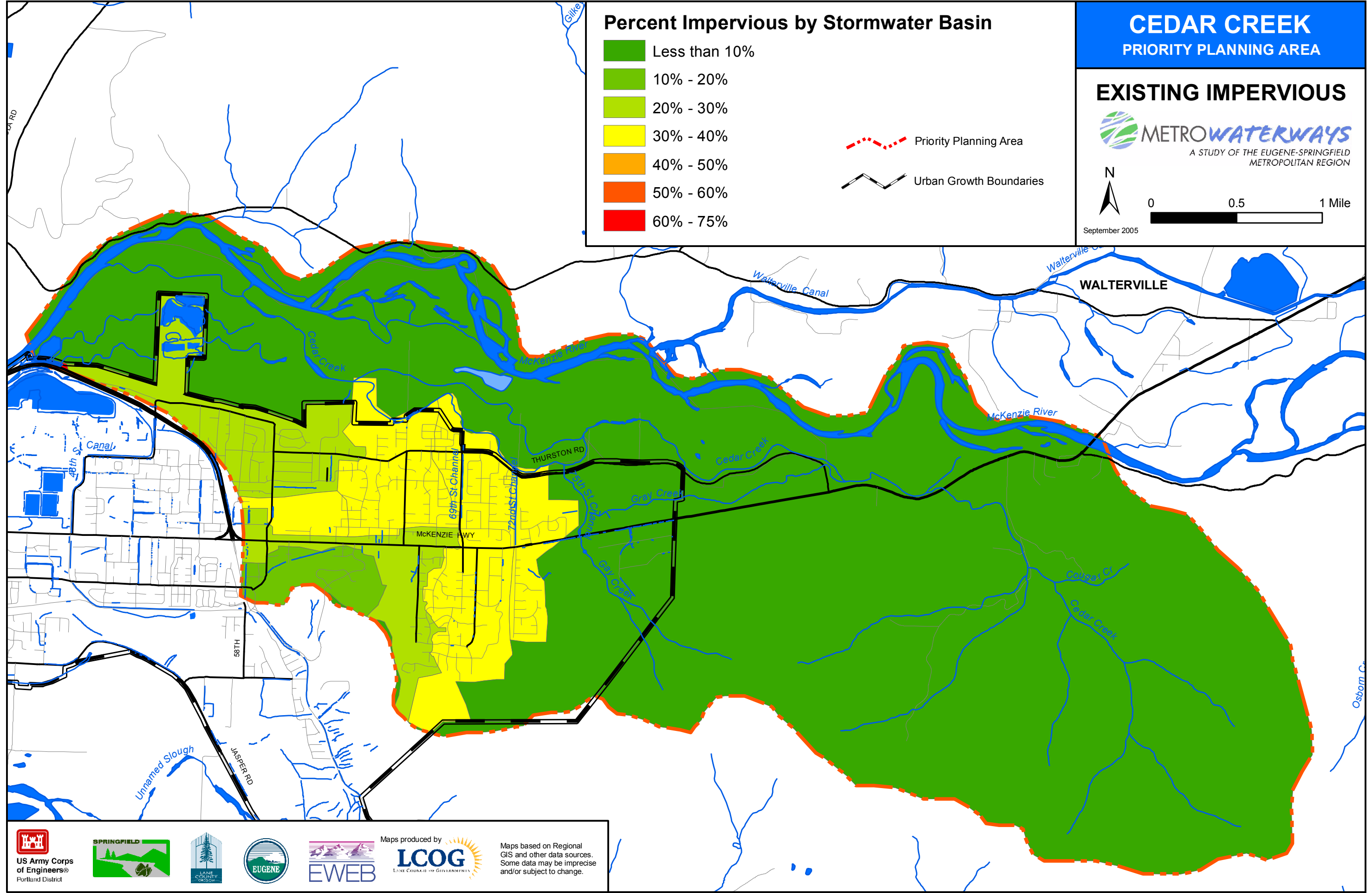
0 0.5 1 Mile

September 2005

### Percent Impervious by Stormwater Basin

- Less than 10%
- 10% - 20%
- 20% - 30%
- 30% - 40%
- 40% - 50%
- 50% - 60%
- 60% - 75%

- Priority Planning Area
- Urban Growth Boundaries



US Army Corps of Engineers®  
Portland District

SPRINGFIELD

LANE COUNTY

EUGENE

EWEB

Maps produced by

LCOG  
LANE COUNTY OF GOVERNMENT

Maps based on Regional GIS and other data sources. Some data may be imprecise and/or subject to change.